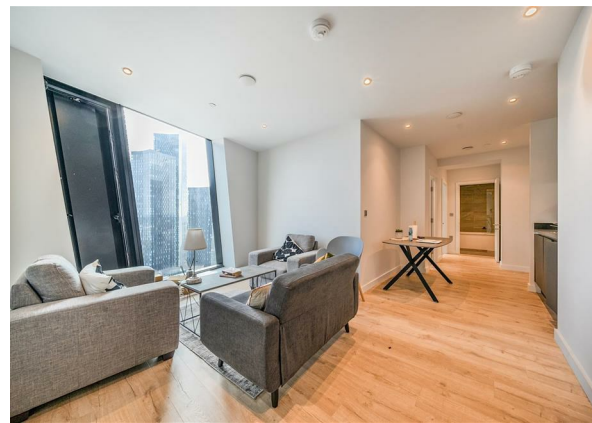


Flat 166, Axis Tower Whitworth Street West, Manchester, M1 5JD
£1,700 Per month
Council Tax Band: D

H&H
BESPOKE



Situated in the vibrant heart of Manchester - Deansgate, this modern purpose-built apartment on Whitworth Street West offers a perfect blend of contemporary living and urban convenience. Spanning an impressive 614 square feet, the property boasts a well-designed layout that maximises space and light.

Upon entering, you are welcomed into a spacious reception room, ideal for both relaxation and entertaining. The room is filled with natural light, creating a warm and inviting atmosphere. The apartment features two comfortable bedrooms, providing ample space for rest and privacy. The well-appointed bathroom is designed with modern fixtures, ensuring a pleasant experience for residents.

Built in 2020, this apartment benefits from the latest in construction standards and energy efficiency, making it a smart choice for those seeking a sustainable lifestyle. The location is particularly advantageous, with easy access to local amenities, public transport, and the vibrant cultural scene that Manchester is renowned for.

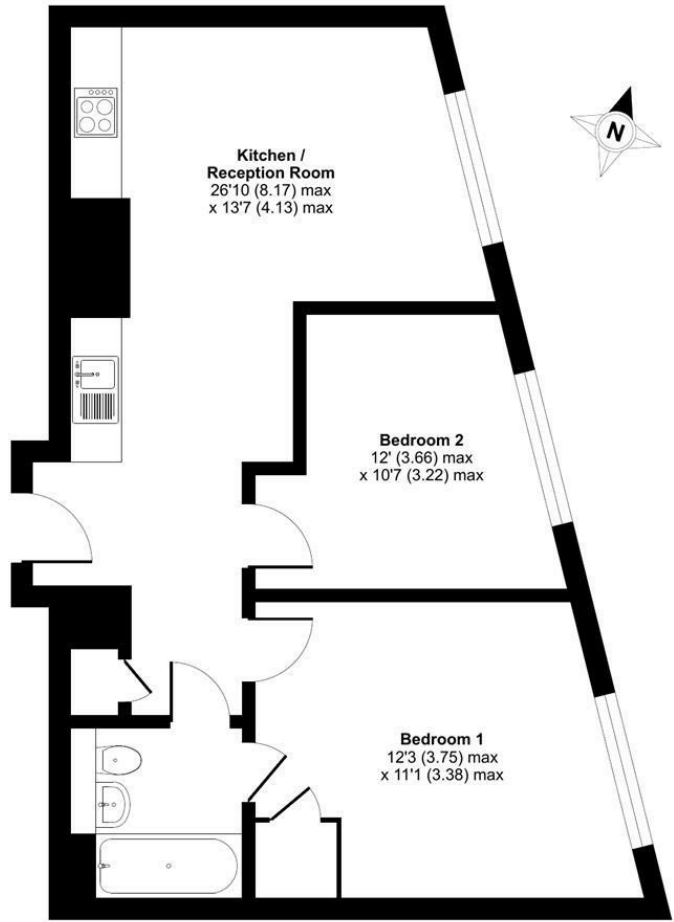


13 Sherrard Street, Melton Mowbray, Leicestershire, LE13 1XH
 0333 242 3760
 Beth@houseandhomebespoke.co.uk

Whitworth Street West, Manchester, M1

Approximate Area = 606 sq ft / 56.2 sq m

For identification only - Not to scale



TWENTY-SIXTH FLOOR

Floor plan produced in accordance with RICS Property Measurement 2nd Edition, Incorporating International Property Measurement Standards (IPMS2 Residential). © ritchecom 2025. Produced for House and Home Bespoke. REF: 1335784

| Energy Efficiency Rating | | Current | Potential |
|--|--|-------------------------|-----------|
| <i>Very energy efficient - lower running costs</i> | | | |
| (92 plus) A | | | |
| (81-91) B | | 85 | 85 |
| (69-80) C | | | |
| (55-68) D | | | |
| (39-54) E | | | |
| (21-38) F | | | |
| (1-20) G | | | |
| <i>Not energy efficient - higher running costs</i> | | | |
| England & Wales | | EU Directive 2002/91/EC | |